

# IRUMA COM+COM



No. 297  
Nov. 2019  
**English**

Edited by: Information Desk for Foreign Residents, Jichi Bunka-ka, Iruma City Office, Tel: 04-2964-1111 ext. 2146

We express our sincere sorrow for those people who lost their lives in the disaster of the 19th Typhoon Habigis, and our deep sympathy for all those affected.  
Iruma International Friendship Society

### WAS EVERYTHING ALL RIGHT WITH YOU?

Typhoon Habigis caused extensive damages to all of eastern Japan on October 12, and Iruma was not an exception. The record-making rainfall caused Iruma-gawa and Furo-gawa rivers to overflow and flooded many houses above/under floor level. We had over 1,000 evacuees in total at several evacuation sites. This gave us a lot of lessons about disaster preparedness.

The Iruma International Friendship Society wants to hear the voices of you, who experienced a disaster in a foreign country, so that your needs will be reflected in future city's policy. Send your comments and suggestions to: [i-society@city.iruma.lg.jp](mailto:i-society@city.iruma.lg.jp)



## WHAT ARE THOSE PAPERS FOR?

### HINTS FOR "NENMATSU CHOSEI" YEAR-END ADJUSTMENT

Have you already been given papers for tax adjustment from your company? The Information Desk receives every year inquiries about the papers. This is a part of procedures called year-end adjustment (年末調整 'nenmatsu chosei') to allow your employer to adjust your income tax for you, taking into consideration various tax deduction items. So as an employee, you need to report on these papers your tax situation to your employer, such as your dependents and their estimated income, your life or earthquake insurance payment, mortgage interest etc. If you skip the procedures, or if you quit a job in the middle of the year, or in some other cases, you need to file a final tax return by yourself by March 16 next year.

You may be given three kinds of application forms; (1) one for dependent exemption, (2) one for one spouse exemption and (3) one for insurance premium exemption. In the form (1), you need to list up all family members who rely on your income, with their MY numbers. The form (2) newly started last year, and requires the details of estimated incomes of you and your spouse. With the (3) form, you can claim a deduction for insurance/pension premium payment, and need to attach certificates of payment which have mailed from your insurance company or the Japan Pension Service.

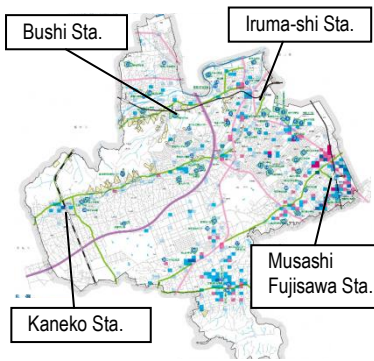


Form (1) looks like this.

Note that if you have a house mortgage, you can claim tax deduction but you need to file final tax return by yourself for the first year; for the second year on, you can claim through your company's adjustment. Also when you claim a dependent tax exemption for your overseas relatives, you need to attach documents to prove family relationships (such as birth certificates with translation) and records of remittance issued by a financial institution.

These are very much complicated forms. The Information Desk for Foreign Residents is happy to help you complete these forms. Bring the certificates of payments or other relevant documents.

## HOW TO READ IRUMA'S FLOOD HAZARD MAP



After the heavy damage caused by Typhoon Hagibis, people became interested in hazard maps which each local government has made and published to show estimated damages by earthquakes, floods and other natural disasters. In Iruma, you can find the city's hazard maps: [http://www.city.iruma.saitama.jp/shisei/bousai/bousai\\_list/1007340.html](http://www.city.iruma.saitama.jp/shisei/bousai/bousai_list/1007340.html)

There are three maps on this page, and the second one shows the records of floods from 2002 to 2016. The dark pink areas have records of above-floor-level floods more than four times, while white areas have no record

of floods. The yellow areas show the landslide disaster caution zones. Make full use of this information for your safety. **Inquiries:** Kiki Kanri-ka (Section for Crisis Management)

## SHODO CALLIGRAPHY CLASS FOR EVERYBODY



This two-day class, held on November 16 and December 7 (both Saturdays) with the cooperation of the Iruma International Friendship Society, there will be a chance to experience "Shodo," art of writing using a brush and ink, with a calligrapher and an interpreter. Class starts at 10:00 a.m. at Room No. 3 on the 3rd floor of the Shimin Kaikan Hall. All tools are prepared. Fee is 500 yen. Numbers are limited to the first ten. Register by phone with the International Friendship Society ☎04-2964-1111 ext. 2147. **Inquiries:** Shimin Kaikan Hall ☎04-2964-2411

## HOLIDAY MEDICAL SERVICES

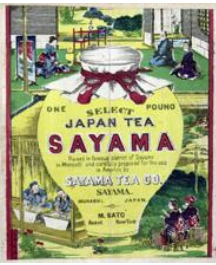
If you or a family member becomes sick or injured on these days, visit a hospital on the list. Healthcare covered by health insurance is provided from 9:00 a.m. to noon and 1:00 to 5:00 p.m. Please make a call before visiting. These services are basically for patients who do not need to be hospitalized.

	Name of hospital	Specialized in	Address	Tel.		Name of hospital	Specialized in	Address	Tel.
Nov 3	Seibu Iruma Byoin	Internal medicine	Noda 3078-13	04-2932-1121	Nov 17	Kobayashi Byoin	Internal medicine	Miyadera 2417	04-2934-5121
	Harada Byoin	Internal & Surg.	Toyooka 1-13-3	04-2962-1251		Toyooka Daiichi Byoin	Surgery	Kurosu 1369-3	04-2964-6311
4	Iruma Heart Byoin	Internal medicine	Koyata 1258-1	04-2934-5050	23	Seibu Iruma Byoin	Internal medicine	Noda 3078-13	04-2932-1121
	Toyooka Daiichi Byoin	Surgery	Kurosu 1369-3	04-2964-6311		Harada Byoin	Internal & Surg.	Toyooka 1-13-3	04-2962-1251
10	Kaneko Byoin	Internal medicine	Araku 680	04-2962-2204	24	Iruma Heart Byoin	Internal medicine	Koyata 1258-1	04-2934-5050
	Toyooka Seikei GekaByoin	Surgery	Toyooka 1-7-16	04-2962-8256		Toyooka Seikei GekaByoin	Surgery	Toyooka 1-7-16	04-2962-8256

**Kyukyu Denwa Sodan** (Emergency consultation hotline) is available 24 hours a day, 365 days a year: **Push #7119 or Dial 048-824-4199.**  
Nurses give advice on whether to seek hospital care for sudden illnesses or injuries.

## SPECIAL EXHIBITION OF CITY MUSEUM HISTORY OF SAYAMA TEA

### Interpretation through Historical Papers



To celebrate the 200th anniversary of the trade of Sayama Tea, a special exhibition featuring tea production in Saitama is now being held at the City Museum ALIT until December 8, from 9:00 a.m. to 5:00 p.m.

There used to be brand teas called Kawagoe-cha and Jiko-cha in Musashi Province, which disappeared in time. The production of tea restarted several hundred years later at the foot of Sayama Hills, and Sayama cha was born with the technique of tea leaf steaming.

This exhibition reviews the origin and renaissance of Sayama tea using historical papers and other key materials.

Admission is 200 yen for adults. Free for students and children. Free for everybody on November 14. The Museum is closed on Monday.  
**Inquiries:** City Museum ALIT ☎04-2934-7711

## SEMI-ANNUAL CHANCE TO APPLY FOR IRUMA MUNICIPAL HOUSING UNITS

New tenant for vacancies available of Iruma's public apartments are invited in June and December. The application process is handled by the Prefectural Housing Cooperation (Jutaku Kyokyu Kosha). Application forms are available until December 20 (Friday) at the Toshi Keikaku-ka (Section for City Planning), City Branch Offices (Higashi-Kaneko, Kaneko, Miyadera, Fujisawa and Seibu) and Satellite Offices (Kurosuo and Higashi-Fujisawa). Apply by December 21 by mail (must be postmarked by the date). Candidates are selected by lottery and then their eligibility is reviewed with various documents such as income certificates. Note that the next round of applications for Saitama Prefectural apartments will be planned in January, 2020. **Inquiries:** Toshi Keikaku-ka (Section for City Planning)

### This Month's Shimin-ka Opening on Saturdays November 9 and 23, 8:30 a.m. to noon

Report of moving-in/moving-out; Issuance of certificate of residence (juminhyo) family register (koseki); Registration of seal/issuance of certificate of registered seal; Report of birth, death, marriage, divorce and other family register-related events

### This Month's Tax Payment (Due date: December 2)

- ◆National Health Insurance Premium (国民健康保険税)
- ◆Kaigo Insurance Premium (後期高齢者医療保険)

### Special 'Saturday' Tax Counter

December 14, 8:30 a.m. to 11:30 a.m.

Tax Counter will be open for payment of city taxes (e.g. residential tax, national health insurance tax) and consultation on tax payments (e.g. payment in installments) on the first floor of the City Office.

## Information Desk for Foreign Residents

Located on the second floor of the City Office.  
All consultations are kept confidential.

English: Every Tuesday, Spanish: Every Wednesday

Chinese: November 7 and December 5 (First Thursday of the month)

All from 9:00 a.m. to noon. Consultations by fax (04-2964-1720) or by e-mail (i-society@city.iruma.lg.jp) are welcome.

## EVENTS THIS MONTH

### AOZORA FLEA MARKET SUNDAY, NOVEMBER 10, 9:30-14:00

Come and check out all the hot deals! The market at the open space of the City Museum ALIT starts at 9:30 a.m. and 120 lots have been designated for selling clothes, books and household items. Used and reconditioned furniture will be sold from 10:30 a.m. In the case of rain, the event will be cancelled. Parking space is limited so take the Seibu Bus or 'Tea Road' Bus to the Museum.

**Inquiries:** Recycle Plaza ☎04-2934-5324

### AGRICULTURAL FESTIVAL National Holiday, November 23, 9:00-13:00

This 'local production for local consumption' event opens from 9:00 a.m. to 1:00 p.m. in the parking lot of Shimin Kaikan Hall. You can buy local fresh-from-garden vegetables as well as products from our Sister City Sado, an island in the Japan Sea, for low prices. Also you can try for free a piece of carrot cake and Sayama tea croquette offered by local restaurants. **Inquiries:** Nogyo Shinko-ka (Section for Agriculture Promotion)



### SAINOMORI FESTIVAL November 23 and 24, 11:00-16:00

The beautiful Sai-no-mori Park was developed on the ground of ex-US Johnson Air Base. In this festival, you can enjoy American atmosphere with foods and goods. **Inquiries:** Koen Kanri Center (Park Administration Center) ☎04-2960-1664

### LIFE-LONG EDUCATION FESTIVAL SUNDAY, DECEMBER 1, 9:45-15:15

The 25th Life-long Education Festival will be held on December 1 (Sunday) at the Shimin Kaikan Hall with the theme of "Now Open the Door." This event aims to provide citizens with the opportunity to meet each other and learn about the activities of individuals and groups in the City. Beside, you can watch a 30-minute free clown show by Biri & Butchy at 11:45 a.m. and 2:15 p.m. at the lobby, and see their performance at various places in the venue. There will also be a free concert of famous opera songs by a soprano Oshiro Miho at 2:00 p.m. in the Hall. **Inquiries:** Shakai Kyoiku-ka (Section for Social Education)



## IHOP International House of Pupils Winter Tutoring Room for Non-Native Children on January 6 & 7

Iruma International Friendship Society will offer a two-day tutoring session for students whose mother tongue is not Japanese. This is a pilot program of the Society in which volunteer tutors help students in their winter homework including "kakizome" calligraphy. It would be good for getting prepared for the new school term. Further details will be announced in the next issue of COM+COM. Keep your kids' schedule empty on these days! **Registration and Inquiries:** International Friendship Society ☎04-2964-1111 ext. 2146 or 2147

Get the latest news from **FBI** Foreigners' Broadcast Information on FM CHAPPY 77.7 MHz  
Every Tuesday 7:00-7:30 p.m. in English,  
1st & 3rd Tuesday 7:30 to 7:55 in Spanish and 2nd & 4th Tuesday 7:30 to 7:55 in Chinese