



TEMPORARY SPECIAL BENEFITS OF 10-MAN YEN FOR HOUSEHOLDS WHOSE RESIDENT TAXES ARE EXEMPTED

The Government of Japan provides a special cash benefits (100,000 yen per household) to households exempted from resident taxes, as a means to support them in the prolonged influences of COVID-19 pandemic. All member of whom are exempted from per capita basis of resident tax for the fiscal year 2021 as of December 10, 2021 are eligible, and will automatically receive a confirmation form for this benefit. The form you receive has already contain your information, i.e. name, address, as well as bank account to receive the benefits, so you just check the box on the form to confirm the information and send it back to the city office using the enclosed envelop.

Also, households whose income has dramatically decreased due to the impact of COVID-19 pandemic may receive this benefit by applying. Ask for the details at the Call Center or at the Information Desk for Foreign Residents.

Inquiries: Iruma-shi Rinji Tokubetu Kyufukin Call Center (Call Center for Temporary Special Benefits) ☎0120-522-700

CITY STARTS THIS MONTH CORONA VACCINATION FOR FIVE TO ELEVEN YEARS OLD



Iruma City will start COVID-19 vaccination for children from five to eleven years old on March 12 (Sat).

Applicable children will receive a coupon early March. Two doses of vaccination are free for all, and the vaccine for children

made by Pfizer (0.2ml/dose) will be used. As of writing, six clinics in the city are designated as the vaccination sites (see below). There is a special web page for this vaccination for children (use the QR code above). Check the page for detailed information and making appointments. **Inquiries:** Chiiki Hoken-ka (Section for Community Health) ☎04-2966-5556



Toyooka	Iruma Kodomo Himawari Clinic	Fujisawa	Iruma Clinic
	Onoue Kids Clinic		Honda Shonika Clinic
	Terashi lin		Seibu Iruma Byoin

CITY OFFICE PARTIALLY OPENS ON MARCH 26 SAT & APRIL 3 SUN FOR REPORTS RELATED TO CHANGE OF RESIDENCE

Because most Japanese schools and companies start their new year on April 1st, the City Office receives many notifications and applications around this time. For your convenience, the City Office will provide a limited range of services on **March 26 (Sat) and April 3 (Sun) between 8:30 a.m. and 5:15 p.m.** Do not take a day off for your paperwork but use these opportunities.

➤ **Regular Semi-monthly Shimin-Ka Opening on Saturday** is held on **March 12** from 8:30 a.m. till noon.

➤ **Special Tax Counter** are also open on **March 26** from 8:30 a.m. to 5:15 p.m. for City tax payment and consultation on tax payments (e.g. extension of time for payment) at the Kokuho Iryo-ka (Section for Health Insurance and Medical Care) on the first floor of the City Office.

FILE YOUR FINAL TAX RETURN BY THE 15TH OF THIS MONTH

Tax returns for the year 2021 should be filed by March 15 (Tue). You can do this filing procedure at the City Office from Monday to Friday until March 15. Bring your Gensen Choshu-Hyo, and other supporting documents such as documents relating to dependents, a certificate of health insurance/life insurance premium payment, and so on. If you have gone through the year-end adjustment (nenmatsu chousei) procedures by your company, you do not have to worry about the final tax return, except when you have any deductible expenses not reported to the company such as a large amount of medical expenses and housing loan. **This year no one-month deadline extension is available.**

Income Report Is Necessary for Visa Extension, and That's Not All

For "medium-to-long-term" visa holders, kazei shomeisho (certificate of taxation) and nozei shomeisho (certificate of tax payment) are necessary every time of extension. These documents are issued by the city office of your residence as of January 1 of the previous year, as long as you (through final tax return filing) or your employer (though tax withholding and year-end adjustment) has reported your income to the taxation office. Moreover, the amount of your income in the previous year is used as the basis in calculating the amounts of your resident taxes and National Health Insurance tax and in deciding the eligibility to receive school expense subsidies for your children, for example. So be sure to submit by deadline!

HOLIDAY MEDICAL SERVICES

If you or a family member becomes sick or injured on these days, visit a hospital on the list. Healthcare covered by health insurance is provided from 9:00 a.m. to noon and 1:00 to 5:00 p.m. Please make a call before visiting. These services are basically for patients who do not need to be hospitalized.

	Name of hospital	Specialized in	Address	Tel.		Name of hospital	Specialized in	Address	Tel.
Mar 6	Iruma Heart Byoin	Internal medicine	Koyata 1258-1	04-2934-5050	Mar 21	Seibu Iruma Byoin	Internal medicine	Noda 3078-13	04-2932-1121
	Toyooka Seikei Geka Byoin	Surgery	Toyooka 1-7-16	04-2962-8256		Toyooka Seikei Geka Byoin	Surgery	Toyooka 1-7-16	04-2962-8256
	Kaneko Byoin	Internal medicine	Araku 680	04-2962-2204		Iruma Heart Byoin	Internal medicine	Koyata 1258-1	04-2934-5050
13	Toyooka Daiichi Byoin	Surgery	Kurosu 1369-3	04-2964-6311	27	Toyooka Daiichi Byoin	Surgery	Kurosu 1369-3	04-2964-6311
20	Kobayashi Byoin	Internal medicine	Miyadera 2417	04-2934-5121	Kyukyu Denwa Sodan (Emergency consultation hotline) is available 24 hours a day, 365 days a year: Push #7119 or Dial 048-824-4199. As for children, Shoni Kyukyu Denwa (pediatrics hotline): Push #8000 or Dial 048-833-7911. Nurses give advice on whether to seek hospital care for sudden illnesses or injuries.				
	Harada Byoin	Internal & Surg.	Toyooka 1-13-3	04-2962-1251					

SEIBU LINE TIMETABLE CHANGE ON MARCH 12

The timetable for each station on Seibu Ikebukuro and Shinjuku Lines will change on March 12 (Sat). The changes on Ikebukuro Line include: one rapid express running from Hanno to Ikebukuro is deleted in the weekday morning; most rapid expresses directly connected to Tokyo Metro depart from not Hanno but Kotesashi in daytime; several expresses departing from Ikebukuro after 6 p.m. are deleted. **Inquiries:** Customer Center of Seibu Railway ☎04-2996-2888



Get the latest news in Iruma from **FBI** on **FM CHAPPY 77.7 MHz**

Every Tuesday 7:00-7:30 p.m. in English with DJ Andi

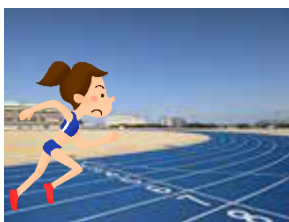
1st & 3rd Tuesday 7:30 to 7:55 in Spanish with DJ Patty
2nd & 4th Tuesday 7:30 to 7:55 in Chinese with DJ Yinglan

CHANGE OF ORGANIZATION AT CITY OFFICE

To optimize the operation of city administration, Iruma City Office will implement a minor organizational conversion on April 1, 2022. Accordingly, the section to which our Information Desk for Foreign Residents will change its name from Jichi Bunka-ka to Chiiki Shinko-ka, meaning community development.

IRUMA AIR BASE PLAYING FIELD NOW AVAILABLE FOR CITIZENS

Attend a meeting for registration



The construction of Self-Defense Force Iruma Base Hospital and its play field completed in the end of December 2021. The field will become available for Iruma citizens in May. The facilities include: an all-weather running track 400 meters around with nine lanes, a facility for long jump, a natural grass soccer field inside the track, two soccer/soft ball fields as well as parking and toilets. Groups need to a registration at the Sport Shinko-ka to use the facility. There will be an **explanatory meeting** for groups who want to register and use the facility **on March 13 (Sun) at 6:00 p.m. at the Sangyo Bunka Center**. No prior application is necessary. **Inquiries:** Sports Shinko-ka (Section for Sports Promotion)

ROAD REOPEN FOR BOTH DIRECTIONS ON THE BRIDGE ON GYOSEI-DORO ON MARCH 18

At the Kenmu Bridge near Fujisawa intersection on the National Route 463, so-called Gyosei Doro, the southbound traffic has been closed due to reconstruction, but will reopen on March 18 (Fri) at 10:00 a.m. Finally! **Inquiries:** Hanno Ken DoSeibi Jimusho (Prefectural Public Work Office) ☎042-973-2282

Get your booster shot at the earliest possible opportunity!

Information Desk for Foreign Residents

Located on the second floor of the City Office. All consultations are kept confidential. **English:** Every Tuesday and, by appointment, 2nd & 4th Friday; **Spanish:** Every Wednesday; **Chinese:** March 3 and April 7 (First Thursday of the month). **All from 9:00 a.m. to noon.** Consultations by fax (04-2964-1720), by e-mail (i-society@city.iruma.lg.jp), or by LINE video talk (needs to make friends with International Friendship Society first) are welcome.

EVENTS THIS MONTH

DRAMA FIESTA IN IRUMA

March 19-21 at Sangyo Bunka Center



The Iruma Drama Fiesta, Iruma's unique annual cultural event, will feature many kinds of theater arts. This year, under the theme of "Fundamental Strengths of Art of Iruma," a dozen of amateur and professional groups will perform at the Sangyo Bunka Center. You can enjoy these performances and workshops with your family for free or with a small fee. Tickets are now on sale, and workshop registrations are now accepted by phone at the Sangyo Bunka Center (☎04-2964-2413)

SALE OF RECONDITIONED FURNITURE AND GOODS

March 5 (Sat) from 10:00 a.m. to 4:00 p.m. at Maruhiro Department Store. City's Recycle Plaza offers reconditioned used furniture and toys for low prices. Cash only. **Inquiries:** Recycle Plaza ☎04-2934-5324

NATURE OBSERVATION WORK @ Yata Spring

March 13 (Sun) Meet at 8:30 a.m. at Seibu Shimin Sport Ground near Seibu Kominkan. Participants are divided into 3 teams according to their interest and observe birds, insects or plants around Yata spring. Fee is 100 yen including insurance. No prior application is necessary. **Inquiries:** Nogyo Shinko-ka (Section for Agricultural Promotion)

PHOTOGRAPH CLASSES FOR BEGINNERS

April 10 and 17 (Sun) at 10:00 a.m. at the Sangyo Bunka Center. A series of two classes to learn the basic knowledge and technique of taking photos. Fee is 1,000 yen. Number is limited to the first 10. Apply at the Sangyo Bunka Center. **Inquiries:** Iruma City Hall Management Office (in the Sangyo Bunka Center) ☎04-2964-2411.

NEW DISASTER PREPAREDNESS GUIDEBOOK IS READY

The City of Iruma made a new version of the Disaster Preparedness guidebook, and is going to deliver all the households in the city by the end of this month. The new guidebook carries a new flood hazard map. Share the information with your family and discuss what to do when the time comes. **Inquiries:** Kiki Kanri-ka (Section for Crisis Management)



JOIN A CLUB AT JIDO CENTER

The Jido Center clubs listed below are welcoming new members. This is a good chance to make friends outside of school. Applications will be accepted until March 6 (Sunday) by reply-paid postal card. If the number of applications exceeds the number of places available, membership will be decided by drawing lots. Each class or club has different age restrictions and schedules (all on weekends). Of course, Information Desk for foreign residents will help you to make an application!

Jazz Dance Class (30 / free)	Rope Jumping Class (36 / free)
Paper Plane Class (10 / ¥500)	Drawing Class (12 / ¥2,000)
Radio Telegraph Class /Club*	Astronomy Club (15 / ¥1,220)
Science Club (16 / ¥2,000)	Nature and Craft Club (12 / ¥600)

(Number of place / annual fee). *Radio Telegraph class requires ¥1,400 for text and another license examination fee.

Inquiries: Jido (Children's) Center ☎04-2963-9611

Saitama COVID-19 Hotline for Foreign Residents: ☎048-711-3025

24 hours/7 days in English, 汉语, Español, Português, 한국-조선어, Tagalog, ภาษาไทย, Tiếngviệt, bahasaindonesia, नेपाली and simple