



## TAX RETURNS FOR 2025 TO BE FILED BY MARCH 16

If you missed your year-end adjustment or "nenmatsu chousei," you need to file your tax return by March 16 (Mon).

### When you need help to fill out the form

You can fill out and submit your return form with assistance of staff at several places in the city including the city office. Bring all the related documents, including the gensen choshu hyo, a certificate of life insurance premium payment, receipts of medical expense, etc. Note that the main purpose of this city service is for resident tax reports, so complicated income tax calculations cannot be handled.

Date	Place
Feb. 16	Kaneko Chiku Center
Feb. 17-18	Fujisawa Chiku Center
Feb. 19-20	Miyadera Kominkan
Feb. 24-25	Higashi Kaneko Chiku Center
Feb. 26-27	City Office (for Noda, Bushi, Shinko residents)
Mar. 2-4	City Office (for Toyooka residents)
Mar. 5-16	City Office (for all)
Reception: 9:00 AM to 1:00 PM	

### Report at Tokorozawa Taxation Office

**Tokorozawa Taxation Office** (Tokorozawa-shi Namiki 1-7) consultation tables on weekdays **from February 16 to March 16** and on **March 1 (Sun)**, **from 8:30 a.m. to 4:00 p.m.** You need to pick up an appointment number by Taxation Office's official LINE (right) account or on the day.

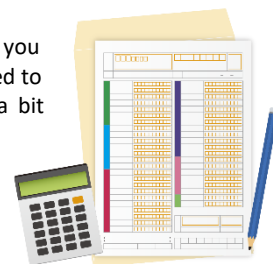


### Try "e-tax" online tax report

With your MY number card and smartphone, you can fill out the report form and send the form online. First you have to obtain a user ID number (16 digits) through e-tax website. When submitting tax return data, you need to sign electronically using MY number card to confirm that the data was created by the user. Although a bit troublesome, once all set, there is no need to buy a postal stamp, and your data will be processed quickly.

### Information Desk is happy to help you with your preparation

At the Information Desk for Foreign Residents, we can fill out the form with you on the Taxation Office website, and print out the form so that you can send it to the Taxation Office by post. Because one case takes a quite long time to complete, please allow enough time for consultations.



## ONE OUT OF 39 PEOPLE IS FOREIGN NATIONAL IN IRUMA

As of January 1, 2026, there are 3,648 foreign residents from 71 countries who have registered in Iruma City, which still shows a continuous increase. Residents from other Asian countries are dramatically increasing. While the total population of Iruma has been on a continuous downward trend, the proportion of foreign residents is as high as **2.56%** as of January 1, 2026; roughly one out of 39 Iruma citizens is a foreign national!



Top	Country	Pop. '26	Pop. '25	Other countries include:
1	Vietnam ↑	932	879	Afghanistan, Argentina, Australia, Bangladesh, Bolivia, Cambodia, Cameroon, Canada, Chile, Chosun, Democratic Republic of the Congo, Cuba, Egypt, Finland, France, Germany, Ghana, Guinea, Honduras, Hungary, Iran, Ireland, Italy, Jordan, Laos, Latvia, Liberia, Malaysia, Mauritania, Mauritius, Mexico, Micronesia, Mongolia, Morocco, New Zealand, Nigeria, Paraguay, Poland, Portugal, Rumania, Russia, Senegal, Singapore, Sudan, Sweden, Swiss, Tanzania, Tunisia, Turkey, Uganda, UK, Uruguay, Uzbekistan, Venezuela, Yemen, Zimbabwe (in alphabetical order)
2	China ↑	621	584	
3	Philippines →	475	476	
4	Indonesia ↑	325	245	
4	Nepal →	249	245	
6	Myanmar ↑	202	145	
6	South Korea →	145	145	
8	Brazil ↑	99	86	
9	Peru ↓	78	84	
10	Thai →	69	65	
11	Sri Lanka ↑	65	55	
12	USA ↑	56	51	
13	Taiwan →	49	48	
14	India ↑	38	27	
15	Pakistan ↑	30	?	
	Others in total	215		

## Childcare Support Allowances of 20,000 Yen per Child To Address Rising Prices

In accordance with national policy to address the prolonged rise in prices, households with children will receive 20,000 yen per child.

Recipients of childcare allowances from Iruma City should have already received a notice, so please check it. Recipients of childcare allowance for children born between January 1 and March 31, 2026, will be notified accordingly.

For details, visit the city's official website.

**Inquiries:** Kodomo Shien-ka (Section for Child Support)

## Life Support Gift Coupon Distribution Project

Using the government's "Special Grant for Regional Revitalization and Priority Support for Price Rise Countermeasures," Iruma City will distribute **4,000 yen worth of gift certificates to all residents**. Eligible recipients are those have registered in Iruma City as of January 1, 2026.

The gift certificates are available as both cards and electronic coupons and can be used at participating stores, primarily within the city. Distribution is scheduled to begin in March.

**Inquiries:** Kikaku-ka (Section for Policy Planning)

## LOWER HOUSE ELECTION ON FEB. 8

The general election for the House of Representatives will be held on Sunday, February 8th. During the early voting period before the vote day, the city hall parking lot will be very crowded, so please use the former Citizen's Hall parking lot. We apologize for any inconvenience, and appreciate your understanding and cooperation. **Inquiries:** Senkyo Kanri linkai Jimukyoku (Election Management Commission Secretariat)

## SEIBU CHIKU CENTER RENOVATION WORK

Due to the aging of the facility, the Seibu Chiku Center will be undergoing renovation work, including waterproofing the roof, renovating the first-floor restrooms, and updating the air conditioning equipment.

The Administration Office and Community Comprehensive Support Center in this facility will remain open during the construction period. However, parking will be limited, and rental of meeting rooms will be suspended up to October. During this period, the center will be closed after 5:15 p.m. Monday through Saturday, and all Sundays. We apologize for any inconvenience and appreciate your understanding and cooperation. **Inquiries:** Chiiki Shinko-ka (Section for Community and Culture)

### Shimin-ka Opening on Saturdays: February 14 & 28, 8:30 a.m. to noon

Registration and certification regarding of moving-in/moving-out, juminhyo, koseki and registered seals; reports of family register-related events (birth, death, marriage, divorce and other)

### This Month's Tax Payment (Due date: Mar. 2)

- ◆ Fixed Property Tax & Urban Planning Tax (固定資産税 & 都市計画税)
  - ◆ National Health Insurance Premium (国民健康保険 kokumin kenko hoken)
  - ◆ Long-term Care Insurance Premium (介護保険 Kaigo hoken)
    - ◆ Medical Insurance Premium for Aged 75 + (後期高齢者医療保険 Koki Koreisha Iryo Hoken)

## EVENTS THIS MONTH

### IRUMA 'BUDO' MARTIAL ARTS FESTIVAL

February 11 (National Holiday) from 9:15 to 11:55 a.m. at the Budokan (martial arts gym) in Kurosu. All the Budo teams in Iruma will gather together to demonstrate their skills. You can see performances and try some Budo, including Kendo, Judo, Kyudo, Shorinji-Kempo, Naginata, Aikido and Iaido. No prior registration is necessary. Admission free. **Inquiries:** Sports Suishin-ka (Section for Sport Promotion)

**KYOGEN "KAGYU" & "OKOSAKO":** February 28 (Sat) at 2:00 p.m. at AMIGO! In Bushi. Enjoy traditional comical Kyogen works as well as a brief lecture on Kyogen. Tickets are now on sale for 2,000 yen for adults (+500yen at the door). **Inquiries:** AMIGO! ☎04-2931-3500

### JAPANESE MUSIC CONCERT

February 8 (Sun) at noon at the Sangyo Bunka Center. A good chance to listen to the harmony of the koto (Japanese harp), shamisen (guitar), and shakuhachi (bamboo flute). Admission is Free. **Inquiries:** Shakai Kyoiku-ka (Section for Social Education)

### CITY MUSEUM SPECIAL EXHIBITION

## Life and Tools in Olden Days Until February 15

This annual exhibition at City Museum ALIT focuses on "recording media" this year. Visit and learn what life was like in Iruma when your grandparents and parents were children. Everyday during the period, you can **try on kimono** and **try to use tools** in those days (10:00 a.m. to noon and 1:00 to 4:00 p.m.).

Admission to the permanent exhibition is 200 yen for adults, and free for this special exhibition. The museum is closed on Mondays and February 12. **Inquiries:** City Museum ALIT ☎04-2934-7711..

### ALL LIBRARIES CLOSED FROM MARCH 2 TO 6

To take an inventory, all the libraries will be closed from March 2 to 6. **Inquiries:** Main Library ☎04-2964-2415



## CONSULTATION SERVICE BY SAITAMA PREFECTURE: Saitama Information & Support (SIS) ☎048-833-3296

Consultations and information on everyday living are offered in 13 languages\* by phone and in person, Monday through Friday, 9:00 a.m. to 4:00 p.m.. Consultations with specialists on labor, immigration and legal issues, which are offered in cooperation with the Association of Certified Social Insurance and Labor Consultants, Tokyo Regional Immigration Bureau and Saitama Bar Association respectively, need a prior appointment.

They also provide intermediary interpretation services over the phone, basically upon request from municipality (prefectural/city/town office), hospitals and public institutions in the prefecture.

\*13 languages: English, Spanish, Chinese, Portuguese, Korean, Tagalog, Thai, Vietnamese, Indonesian, Nepali, Russian, Ukrainian and plain Japanese.



## Information Desk for Foreign Residents

Located on the second floor of the City Office. All consultations are kept confidential. **English:** Every Tuesday and, by appointment, 2nd & 4th Friday; **Spanish:** Every Wednesday; **Chinese:** February 5 (on the first Thursday of the month). **All from 9:00 a.m. to noon.** Consultations by fax (04-2964-1720), by e-mail (i-society@city.iruma.lg.jp), or by LINE video talk (needs to make friends with International Friendship Society first) are welcome.

## SUNDAY/HOLIDAY MEDICAL SERVICES

If you or a family member becomes sick or injured on these days, visit a hospital on the list. Healthcare covered by health insurance is provided from 9:00 a.m. to noon and 1:00 to 5:00 p.m. Please make a call before visiting. These services are basically for patients who do not need to be hospitalized

	Name of hospital	Specialized in	Address	Tel.		Name of hospital	Specialized in	Address	Tel.
Feb. 8	Iruma Heart Byoin	Internal medicine	Koyata 1258-1	04-2934-5050	22	Seibu Iruma Byoin	Internal medicine	Noda 3078-13	04-2932-1121
	Harada Byoin	Surgery	Toyooka 1-13-3	04-2962-1251		Harada Byoin	Surgery	Toyooka 1-13-3	04-2962-1251
11	Kaneko Byoin	Internal medicine	Araku 680	04-2962-2204	23	Iruma Heart Byoin	Internal medicine	Koyata 1258-1	04-2934-5050
	Toyooka Seikei Geka Byoin	Surgery	Toyooka 1-7-16	04-2962-8256		Toyooka Seikei Geka Byoin	Surgery	Toyooka 1-7-16	04-2962-8256
15	Kobayashi Byoin	Internal medicine	Miyadera 2417	04-2934-5121	Kyukyu Denwa Sodan (Emergency consultation hotline) is available 24 hours a day, 365 days a year: <b>Push #7119</b> or <b>Dial 048-824-4199</b> . As for children, Shoni Kyukyu Denwa (pediatrics hotline): <b>Push #8000</b> or <b>Dial 048-833-7911</b> . Nurses give advice on whether to seek hospital care for sudden illnesses or injuries.				
	Toyooka Daiichi Byoin	Surgery	Kurosu 1369-3	04-2964-6311					